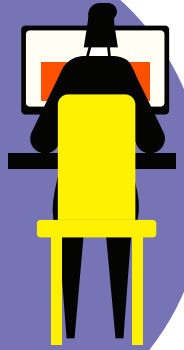


IIDA

COMMERCIAL INTERIOR DESIGN FACT SHEET

90%

The average time an American spends per day in the interior environment, demonstrating the need for well-designed, well-planned, and well-executed spaces.



WHAT IS COMMERCIAL INTERIOR DESIGN?

According to the Council for Interior Design Qualification (CIDQ), interior design is a multi-faceted profession in which creative and technical solutions are applied within a structure to achieve a built interior environment. These solutions are functional, enhance the quality of life and culture of the occupants, and are aesthetically attractive. Designs must adhere to all state and local codes and regulatory requirements, and encourage the principles of environmental sustainability.

COMMERCIAL INTERIOR DESIGN

refers to the design of commercial environments.



HEALTHCARE



EDUCATION



CORPORATE



RETAIL



HOSPITALITY



RESTAURANTS



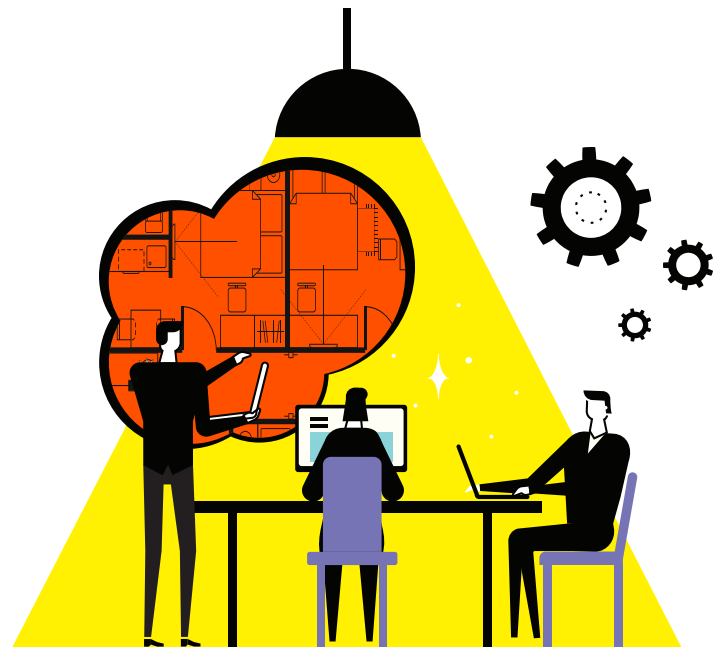
LAB AND
RESEARCH



MIXED-USE
DEVELOPMENTS

DESIGNERS

develop and build out functional interior spaces within a building shell, taking building systems and regulatory codes into account.



MUST HAVE:

A COLLEGE DEGREE

MULTIPLE YEARS OF EXPERIENCE

TAKEN AND PASSED A RIGOROUS EXAM

The Economic Impact of the Interior Design Industry

\$96.3 billion

The total estimated impact of the interior design industry on the United States in 2016, which can support 522,400 jobs annually.

\$49.0 billion

The total estimated revenue for the interior design industry, which also generates an additional \$47.3 billion in adjacent industries.

\$4.5 billion

The estimated amount of U.S. federal tax the interior design sector generated in 2016.

WHY COMMERCIAL INTERIOR DESIGN CERTIFICATION MATTERS

Commercial interior designers follow **life-safety, fire, and building codes**, and **American with Disabilities Act (ADA) specifications**, as well as **best practices for wellness, sustainability and green building practices, and ergonomics**.



VOLUNTARY CERTIFICATION OF COMMERCIAL INTERIOR DESIGNERS:

ALLOWS

commercial interior designers to submit their work for permits, which opens up competition for consumers and clients.

DOES NOT

prevent anyone from providing interior design services as they do today. It does not prevent anyone from calling themselves an “interior designer” and it does not limit entry into the field.

REQUIRES

commercial interior designers to successfully pass a rigorous exam.

ABOUT IIDA

IIDA is the the commercial interior design association with global reach. We support design professionals, industry affiliates, educators, students, firms, and their clients through our network of 15,000+ members across 58 countries.

We advocate for advancement in education, design excellence, legislation, leadership, accreditation, and community outreach to increase the value and understanding of interior design as a profession that enhances business value and positively impacts the health and well-being of people’s lives every day. www.iida.org

IIDA

111 E. Wacker Drive, Suite 222
Chicago, IL 60601
888-799-IIDA (4432)
awilson@iida.org